



# THE WEST LANCS LETTER

The Newsletter of the West Lancashire Light Railway



[Visitor info](#)

[About us](#)

[Support us](#)

## WELCOME to West Lancs Letter No.28 !

Another successful special event recently, our very popular Teddy Bears Day, with no less than five very fierce bears lurking in the woods, pretending they hadn't got enough picnic to eat. We didn't believe them either.



Visiting locomotive Stanhope continues to give good service, shown here pulling a Teddy Bears service into Becconsall, driver Simon at the controls.

[More photos of Teddy Bears](#)



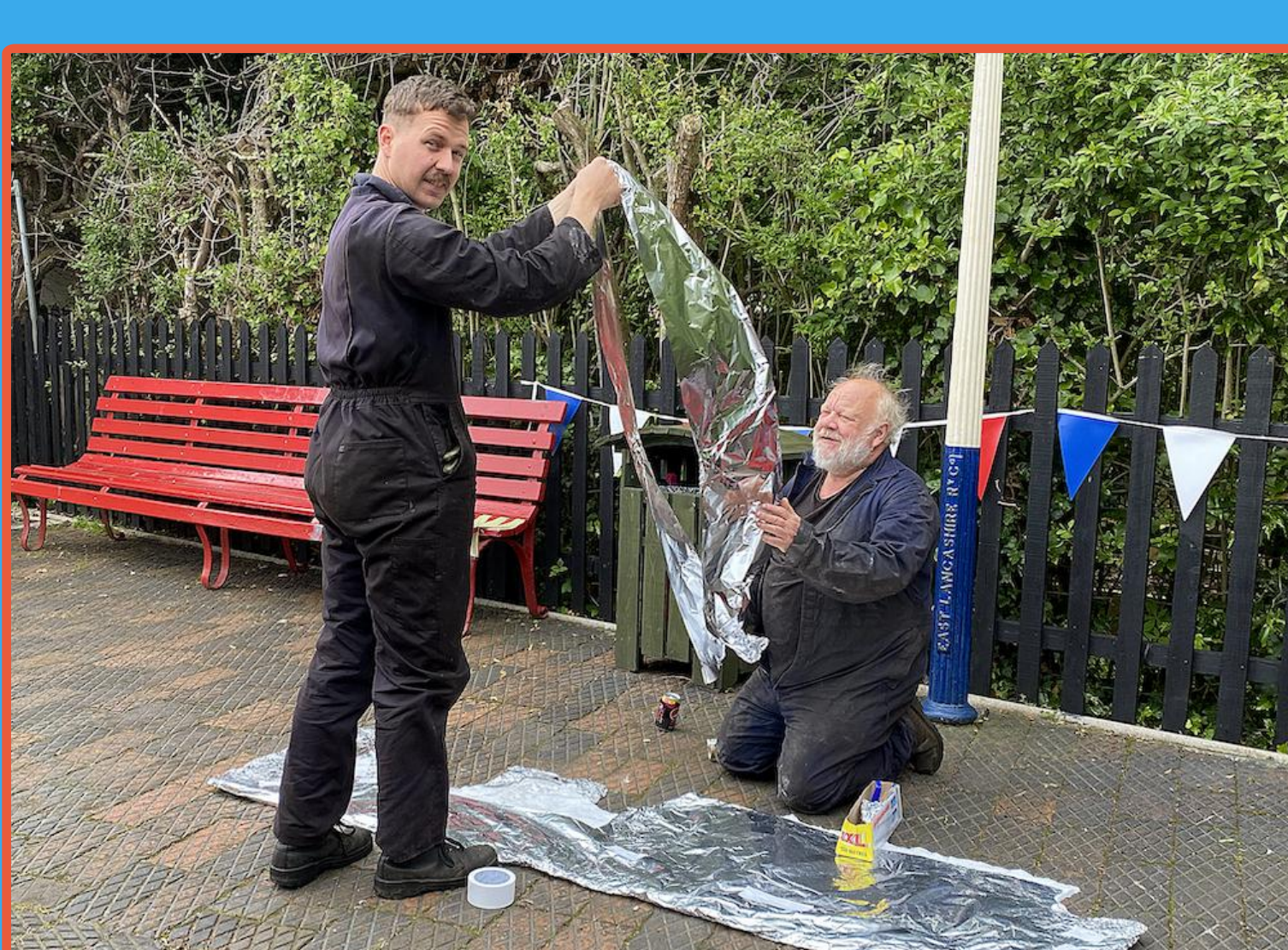
An important milestone in the restoration of our Quarry Bagnall Sybil, as the locomotive is shunted all the way down the line to Delph, to check operation of the motion and various other components. Gordon and Richard cast a critical eye over the proceedings.



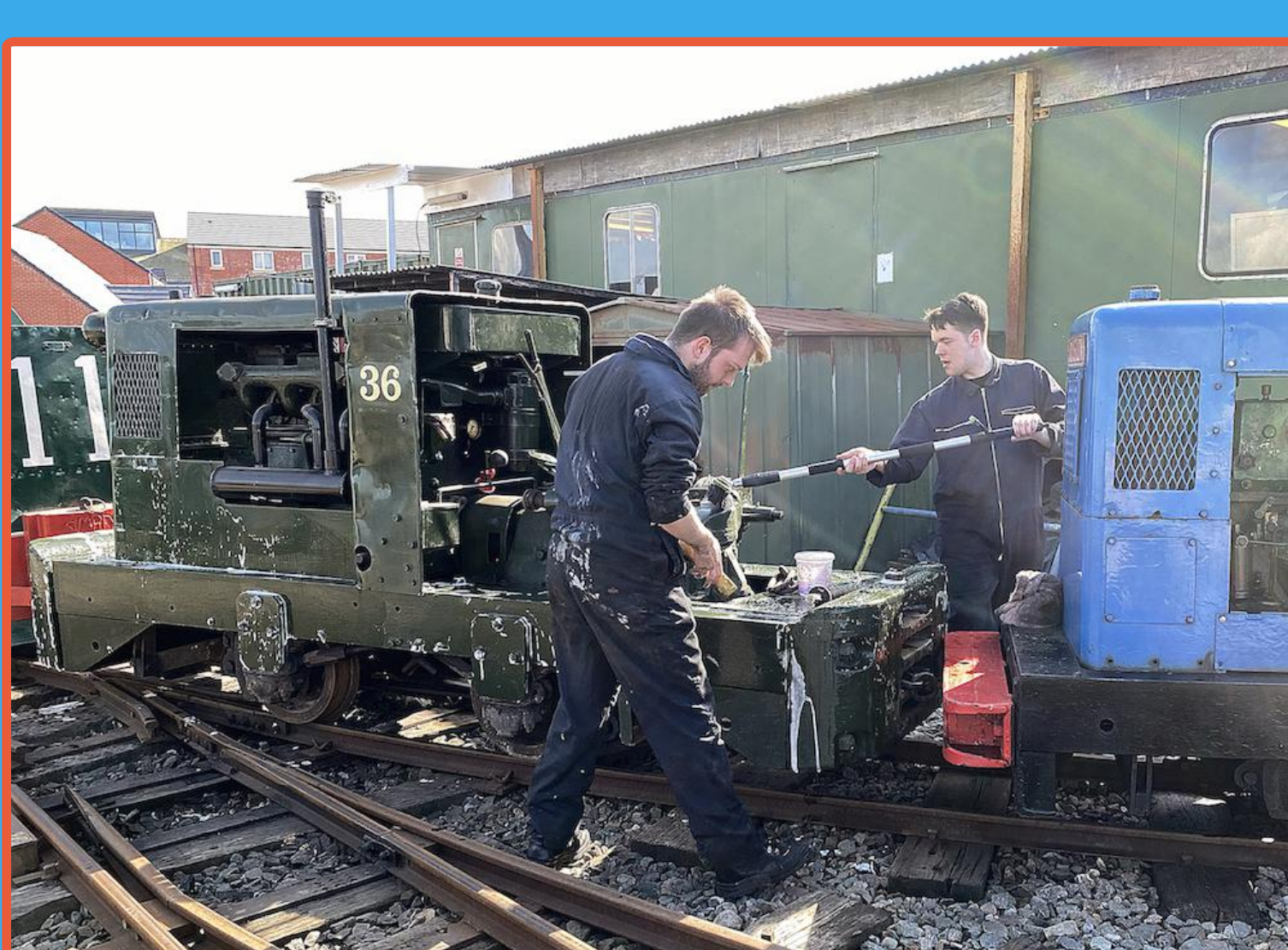
Sometimes the fun is almost too much. Simon, Paul and Mike get to shovel and rake several tonnes of wet concrete, to form the base of the new ash pit.



Absconding with some valuable, and increasingly rare, loot. Five tons of finest Welsh cobbles arrived by special delivery, and was rapidly propelled by equally special train to a place of safety. Where exactly is not for publication...



No, not kite-making, nor preparing to roast an outside chicken. Simon and Keith do some cutting-out of aluminium foil for Montalban's boiler insulation.



It's not just the steam engines that get all the love. James and Harry administer some tender loving care to Ruston and Hornsby diesel locomotive No.36.



Not just heritage trains - a fine group of classic cars visits the Railway, courtesy of the Thursday Knights Vintage and Classic Car Club.



And it's not just classic cars! Graham Townsend brings his vintage Fordson tractor to visit us.



And finally, from June 2008, David and Derek brave the summer rain to prepare Stanhope for duty.

**Don't miss this Sunday's special event - Strawberries and Steam !**



**BUY OUR ADVANCE ANYDAY DISCOUNT TICKET!**  
Valid for all trains, including special events (except Santa Specials & Halloween)  
No expiry date - use whenever you like!  
[Click HERE](#) to buy



Copyright © June 2022 West Lancashire Light Railway.  
Want to change how you receive these emails?  
You can update your preferences or unsubscribe from this list.

